

# Rothbury Road

Hove

**LEX**TONS /  
SALES  
LETTINGS  
AUCTIONS  
COMMERCIAL



## Rothbury Road, Hove

£850,000

2

BEDROOM

1

BATHROOM

1

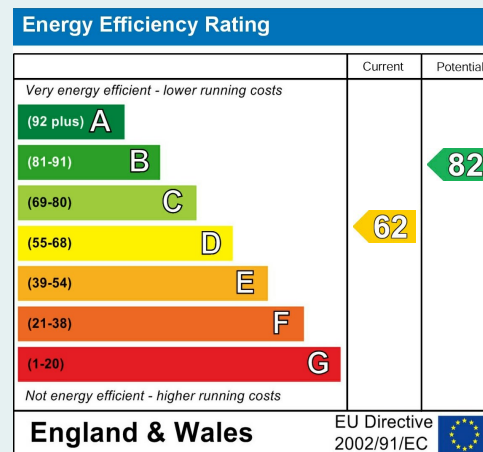
RECEPTION

## About the property

This is a rare and valuable opportunity to acquire a spacious modern detached bungalow, standing in lovely landscaped gardens which form a substantial plot in a peaceful, private setting.

Quietly located at the lower end of Rothbury Road, this property offers considerable potential for updating and enlargement (subject to the relevant consents) as it stands in it's own private and level grounds, with a huge frontage, providing extensive parking facilities and a beautiful mature rear garden, bathed in sunshine for most of the day.

Notwithstanding the private setting, the bungalow is ideally located, close to local amenities in Portland Road and Boundary Road, together with bus services on New Church Road which connect regularly to the City centre. Hove seafront is within a short level walk. There is no chain involved with the sale and an early viewing is considered essential, by strict appointment with the owners Sole Agents.



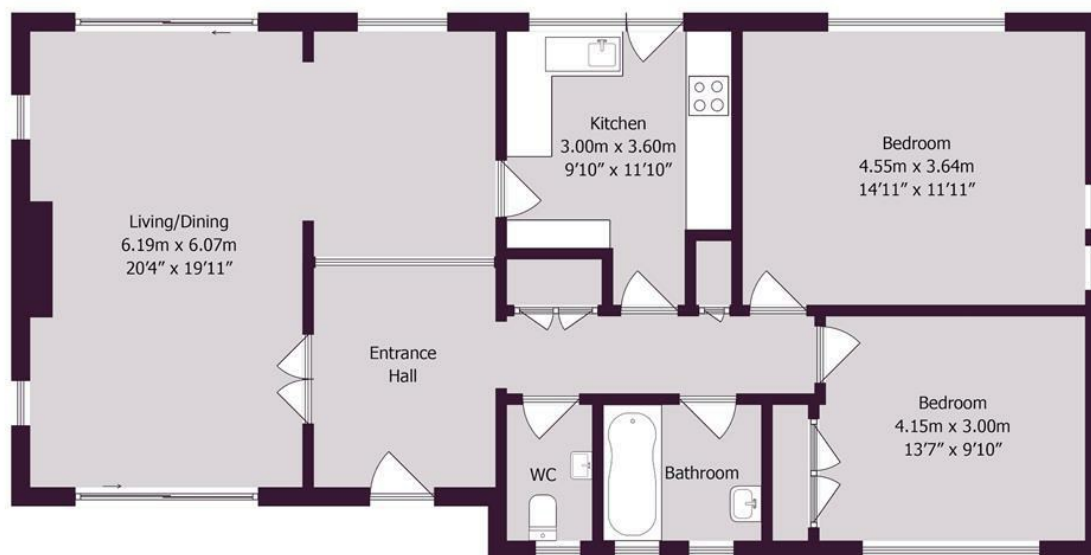
Don't miss out, call our Sales team  
arrange a viewing appointment:

**01273 56 77 66**

174 Church Road, Hove, BN3 2DJ  
hovesales@lextons.co.uk | www.lextons.co.uk







Approximate gross internal floor area 90.6 sq m/ 975 sq ft

Whilst every care has been taken to ensure accuracy, dimensions are approximate and for illustrative purposes only.

Created by Property Photography UK for Lextons. All rights reserved.

Don't miss out, call our Sales team  
arrange a viewing appointment:

**01273 56 77 66**

174 Church Road, Hove, BN3 2DJ  
hovesales@lextons.co.uk | [www.lextons.co.uk](http://www.lextons.co.uk)